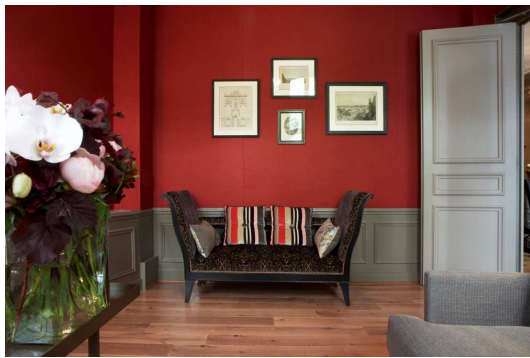




*Located in the heart of Paris's Left Bank, within walking distance from the Seine and transport to everywhere else, the Aviatric is a highly individual hotel with a romantic atmosphere and an elegant designer edge. Step inside and see for yourself...*

### THE LOBBY AND LOUNGE



One of the Aviatric's strengths is that it feels like a town-house – a home and not a hotel. Nowhere is this more obvious than in the lobby, where, were it not for the reception desk, you could be walking into somebody's private hallway. According to your mood, you can read or enjoy a drink in the 19<sup>th</sup>-century style lounge– a luscious mélange of reds, greys and browns, with a marble fireplace and delightful knickknacks – or sink into armchairs near the computer room and hidden winter garden for a chat with the ever-friendly staff.

### THE BREAKFAST ROOM

Take an armchair tour of bohemian art in Paris in the turn-of-the-century style “bistro”, decorated, floor to ceiling, in exhibition posters collected over the years. A buffet breakfast is laid out on a lovely old wooden sideboard, including sticky French pastries, croissants and baguettes from a nearby bakery, fruit, cereals, cold-meats and cheese, plus the house specialty homemade *pain-perdu* (bread pudding).



### SERVICES



The Aviatric staff speak **English, French, Spanish** and **Portuguese**. Being a family-run establishment, extra care is taken to ensure that guests feel at home and pampered. Every evening a complimentary aperitif is offered to everyone staying in the hotel.